

Gas station pharmacology

Commonly Used Drugs in the Gray Zone of Legality and Safety

J. Luke Engeriser, MD, DFAPA, DFASAM
President
Alabama Society of Addiction Medicine
Residency Program Director, Psychiatry
Fellowship Program Director, Addiction Medicine
Associate Professor
USACOM, Department of Psychiatry
Deputy Chief Medical Officer
AltaPointe Health



Disclosure

I have no conflicts of interest to report and I intend to reference unlabeled/unapproved uses of drugs and products in my presentation.



What is a "gas station drug"?

Legal ambiguity

Addictive potential

No FDA oversight

Common gas station drugs

Tianeptine (Tianaa, Za Za)	Kratom	Delta-8-thc, delta-10-thc	Synthetic cannabinoids/spice
Phenibut	Bath salts	Cold/flu medicines	Sexual enhancers

Opioid-like



Kratom

- Mu-opioid partial agonist
- Use for self-withdrawal management
- Southeast Asia - thang, kakuam, thom, ketum, and biak

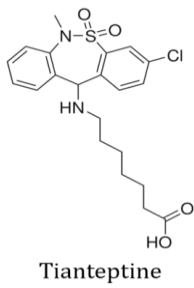


Trakulsirachai S, Sathirakul K, Auparakkitanon S, et al. Pharmacokinetics of mitragynine in man. Drug Des Devel Ther. 2015;9:2421-2429. Published 2015 Apr 29. doi:10.2147/DDDT.S79658

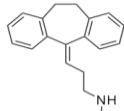
Tianeptine

- Structurally similar to tricyclics
- Mu-Opioid partial agonism
- Withdrawal syndrome

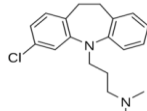




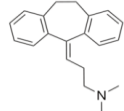
Typical TCAs



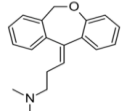
Nortriptyline



Clomipramine



Amitriptyline



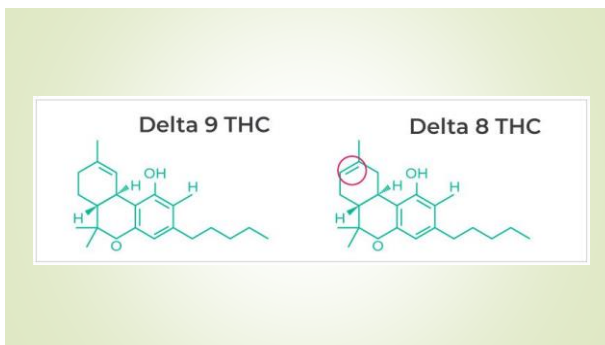
Doxepin

Loperamide

- Peripheral mu-opioid agonist
- Crosses blood brain barrier at high dose



[illegible]



Synthetic cannabinoids/Mojo



Common brands:

Spice
K2
Scooby snax
Ninja
Yucatan
many others

- PSYCHOTROPIC
- VAPING
- CHEMICAL VARIATION



Sedative/hypnotic-like

Phenibut



- GABA-B agonist and gabapentinoid
- "nootropic"



COMMON BRANDS:

SLEEP WALKER
RED DAWN
ANVIFEN
FENIBUT
NOOFEN
LIFTMODE

Kava

- From *Piper methisticum* shrub
- Potentiates gaba-a receptor



Amanita muscaria



- AKA Fly agaric and fly amanita



Alcohol



Stimulant-like

Synthetic cathinones (bath salts)

- Khat plant
- Psychotogenic
- Excited delirium



Caffeine/energy drinks

- 85% of us population consumes daily
- Safe amount- up to 400mg
- Tolerance varies



Pseudoephedrine

- Stimulates alpha and beta adrenergic receptors



Nicotine



PCP/ketamine-like

OTC cough

- Dextromethorphan (DXM)
- NMDA antagonist
- Street names: CCC, Dex, DXM, Poor Man's PCP, Robo, Rojo, Skittles, Triple C, Velvet





Nitrous oxide

LSD-like

Salvia
Divinorum

Other

Sexual enhancement

- Royal Honey
- Rhino products

Diphenhydramine






Amyl Nitrites "Poppers"





BUG SPRAY

Paper route, wasping, KD, Katie, zombie



Questions?
