

# Gas station pharmacology

Commonly Used Drugs in the Gray Zone of Legality and Safety

J. Luke Engertser, MD, DFAPA, DFASAM  
President  
Alabama Society of Addiction Medicine  
Residency Program Director, Psychiatry  
Fellowship Program Director, Addiction Medicine  
Associate Professor  
USACOM, Department of Psychiatry  
Deputy Chief Medical Officer  
AllaPointe Health



---

---

---

---

---

---

---

---

## Disclosure

I have no conflicts of interest to report and I intend to reference unlabeled/unapproved uses of drugs and products in my presentation.

---

---

---

---

---

---

---

---



What is a "gas station drug"?

Legal ambiguity

Addictive potential

No FDA oversight

---

---

---

---

---

---

---

---

### Common gas station drugs

Tianeptine (Tianaa, Za Za)	Kratom	Delta-8-thc, delta-10-thc	Synthetic cannabinoids/spice
Phenibut	Bath salts	Cold/flu medicines	Sexual enhancers

---

---

---

---

---

---

---

---

### Opioid-like

---

---

---

---

---

---

---

---



### Kratom

- Mu-opioid partial agonist
- Use for self-withdrawal management
- Southeast Asia - thang, kakuam, thom, ketum, and biak



Trakulsricha S, Sathirakul K, Auparakkitamon S, et al. Pharmacokinetics of mitragynine in man. Drug Des Devel Ther. 2015;9:2421-2429. Published 2015 Apr 29. doi:10.2147/DDDT.379658

---

---

---

---

---

---

---

---

### Tianeptine

- Structurally similar to tricyclics
- Mu-Opioid partial agonism
- Withdrawal syndrome




---

---

---

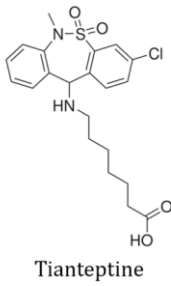
---

---

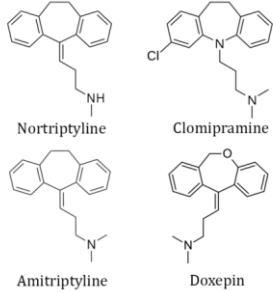
---

---

---



### Typical TCAs




---

---

---

---

---

---

---

---

### Loperamide

- Peripheral mu-opioid agonist
- Crosses blood brain barrier at high dose




---

---

---

---

---

---

---

---



---

---

---

---

---

---

---



---

---

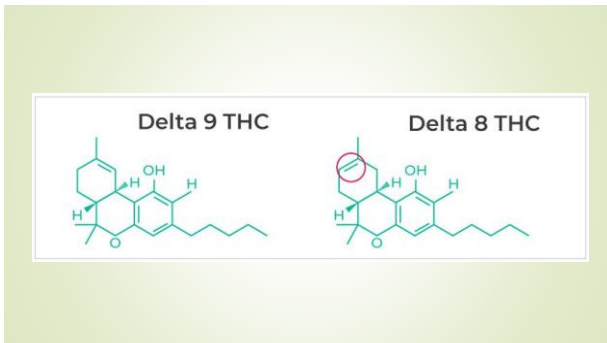
---

---

---

---

---



---

---

---

---

---

---

---

### Synthetic cannabinoids/Mojo



Common brands:  
Spice  
K2  
Scooby snax  
Ninja  
Yucatan  
\*\*many others\*\*

- PSYCHOTROPIC
- VAPING
- CHEMICAL VARIATION




---

---

---

---

---

---

---

---

Sedative/hypnotic-like

---

---

---

---

---

---

---

---

### phenibut



- Gaba-B agonist and gabapentinoid
- "nootropic"



COMMON BRANDS:  
SLEEP WALKER  
RED DAWN  
ANVIFEN  
FENIBUT  
NOOFEN  
LIFTMODE

---

---

---

---

---

---

---

---

### Kava

- From Piper methisticum shrub
- Potentates gaba-a receptor



---

---

---

---

---

---

---

---

### Amanita muscaria



- AKA Fly agaric and fly aminita



---

---

---

---

---

---

---

---

### Alcohol



---

---

---

---

---

---

---

---

# stimulant-like

---

---

---

---

---

---

---

### Synthetic cathinones (Bath salts)

- Khat plant
- Psychotogenic
- Excited delirium



---

---

---

---



---

---

---

### Caffeine/energy drinks

- 85% of us population consumes daily
- Safe amount- up to 400mg
- Tolerance varies



---

---

---

---

---

---

---

## Pseudoephedrine

- Stimulates alpha and beta adrenergic receptors



---

---

---

---

---

---

---

---

## Nicotine



---

---

---

---

---

---

---

---

## PCP/ketamine-like

---

---

---

---

---

---

---

---



### OTC cough

- Dextromethorphan (DXM)
- NMDA antagonist
- Street names: CCC, Dex, DXM, Poor Man's PCP, Robo, Rojo, Skittles, Triple C, Velvet



---

---

---

---

---

---

---

---



### Nitrous oxide

---

---

---

---

---

---

---

---

### LSD-like

---

---

---


---

---



---

---

---



Salvia  
Divinorum


---

---

---

---

---

---

---

---

other

---

---

---

---

---

---

---

---

Sexual enhancement

- Royal Honey
- Rhino products







---

---

---

---

---

---

---

---

### Amyl Nitrites "Poppers"



---

---

---

---

---

---

---

---

### Diphenhydramine



---

---

---

---

---

---

---

---



### BUG SPRAY

Paper route, wasping, KD, Katie, zombie

---

---

---

---

---

---

---

---



Questions?

---

---

---

---

---

---

---