

## Gas station pharmacology

Commonly Used Drugs in the Gray Zone of Legality and Safety

J. Luke Engeriser, MD, DFAPA, DFASAM

Residency Program Director, Psychiatry  
Fellowship Program Director, Addiction Medicine  
Associate Professor  
USACOM, Department of Psychiatry  
Deputy Chief Medical Officer  
AltaPointe Health  
President  
Alabama Society of Addiction Medicine




---

---

---

---

---

---

---

---

**I have no financial relationships with an ineligible company/ commercial interest. I will discuss community use of multiple off-label/unapproved products but will not endorse their use for treatment of any medical condition.**

---

---

---

---

---

---

---

---



What is a "gas station drug"?

Legal ambiguity

Addictive potential

No FDA oversight

---

---

---

---

---

---

---

---

## Common gas station drugs

Tianeptine  
(Tiana, Zia, Za)

Kratom

Delta-8-THC, delta-10-THC

Nitrous oxide

Phenibut

Poppers

Cold/flu medicines

Sexual enhancers

---

---

---

---

---

---

---

Opioid-like

---

---

---

---

---

---

---



## Kratom

- Mu-opioid partial agonist
- Use for self-withdrawal management



thang, kakuam, thom, ketum, biak

---

---

---

---

---

---

---




---

---

---

---

---

---

---

---

## Tianeptine

- Structurally similar to tricyclics
- Mu-Opioid partial agonism
- Withdrawal syndrome




---

---

---

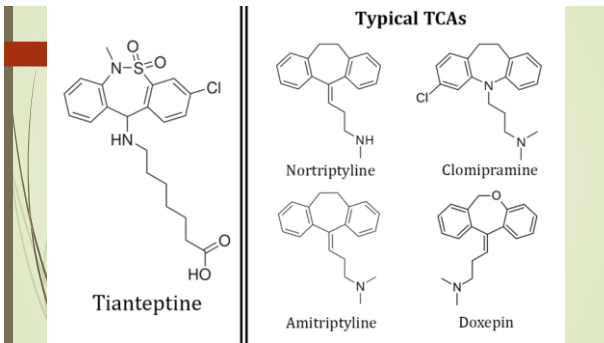
---

---

---

---

---




---

---

---

---

---

---

---

---

Loperamide

- Peripheral mu-opioid agonist
- Crosses blood brain barrier at high dose



---

---

---

---

---

---

---

Cannabis-like

---

---

---

---

---

---

---

Delta-8-THC



---

---

---

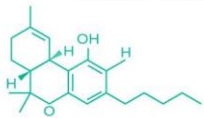
---

---

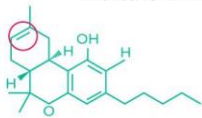
---

---

Delta 9 THC



Delta 8 THC



---

---

---

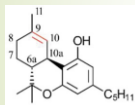
---

---

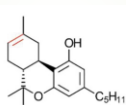
---

---

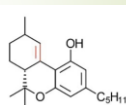
Delta-10-THC



Δ9-THC



Δ8-THC



Δ10-THC

---

---

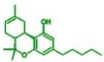
---

---

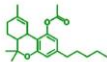
---

---

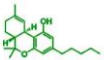
---



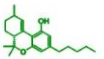
DELTA 8 THC



THC-O



DELTA 9 THC



DELTA 10 THC

THC - O (-acetate)



---

---

---

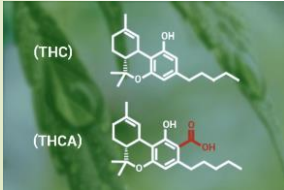
---

---

---

---

## Tetrahydrocannabinolic Acid (THCA)




---

---

---

---

---

---

---

### HB445 – In effect January 1, 2026

- 3<sup>rd</sup> Party Testing
- Serving size restrictions
- Cannot sell beverages also containing alcohol or another intoxicating compound
- Packaging needs to be less appealing to children
- Prohibit selling to anyone under age 21
- Store needs a license to sell, and under 21 not allowed in store
- Bans online sales

---

---

---

---

---

---

---

## Synthetic cannabinoids/Mojo



**Common brands:**  
*Spice*  
*K2*  
*Scooby snax*  
*Ninja*  
*Yucatan*  
 \*\*many others\*\*

- PSYCHOTROPIC
- VAPING
- CHEMICAL VARIATION




---

---

---

---

---

---

---

Sedative/hypnotic-like

---

---

---

---

---

---

---

### phenibut



- Gaba-B agonist and gabapentinoid
- "nootropic"



COMMON BRANDS:  
SLEEP WALKER  
RED DAWN  
ANVIFEN  
FENIBUT  
NOOFEN  
LIFTMODE

---

---

---

---

---

---

---

### Kava

- From Piper methisticum shrub
- Potentiates gaba-a receptor



---

---

---

---

---

---

---

### Amanita muscaria



■ AKA Fly agaric  
and fly amanita



---

---

---

---

---

---

---

### Alcohol



---

---

---

---

---

---

---

### Stimulant-like

---

---

---

---

---

---

---



### Synthetic cathinones (Bath salts)

- Khat plant
- Psychogenic
- Excited delirium



---

---

---

---

---

---

---

### Caffeine/energy drinks

- 85% of us population consumes daily
- Safe amount- up to 400mg
- Tolerance varies



---

---

---

---

---

---

---

### Pseudoephedrine

- Stimulates alpha and beta adrenergic receptors



---

---

---

---

---

---

---



## Ephedrine inhalers/tablets

Stimulates alpha and beta adrenergic receptors

---

---

---

---

---

---

---

## Nicotine




---

---

---

---

---

---

---

## PCP/ketamine-like

---

---

---

---

---

---

---

### OTC cough

- Dextromethorphan (DXM)
- NMDA antagonist
- Street names: CCC, Dex, DXM, Poor Man's PCP, Robo, Rojo, Skittles, Triple C, Velvet



---

---

---

---

---

---

---



Nitrous oxide

---

---

---

---

---

---

---

LSD-like

---

---

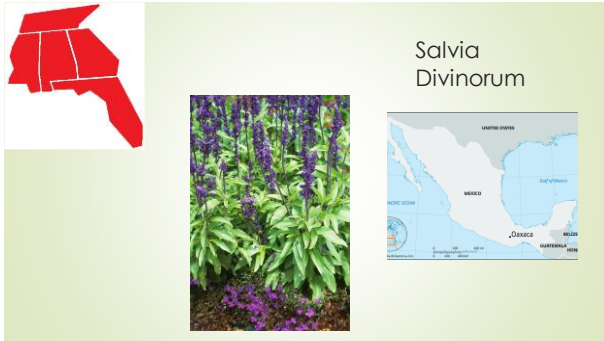
---

---

---

---

---




---

---

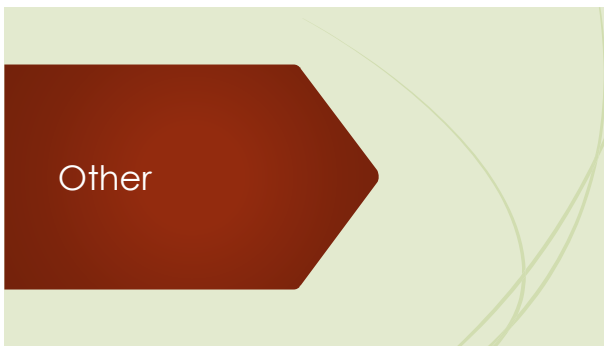
---

---

---

---

---




---

---

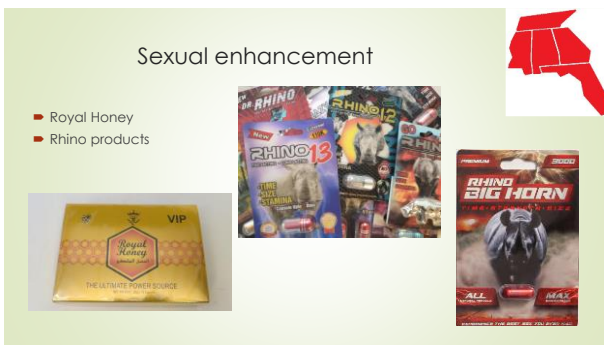
---

---

---

---

---




---

---

---

---

---

---

---

## Diphenhydramine



---

---

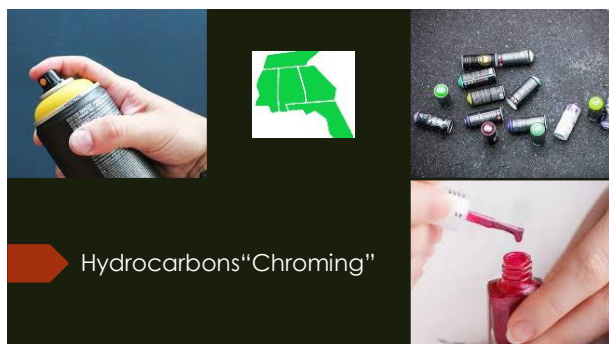
---

---

---

---

---



---

---

---

---

---

---

---

## Amyl Nitrites "Poppers"



---

---

---

---

---

---

---





**BUG SPRAY**

Paper route, wasping, KD, Katie, zombie

---

---


---

---

---

---

---



Questions?

---

---

---

---

---

---

---